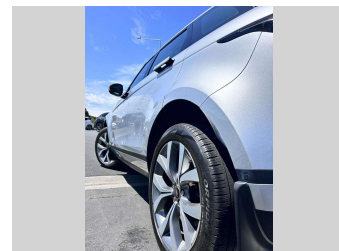
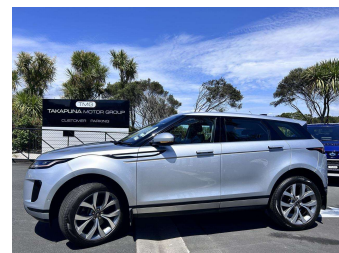



2019 Land Rover Range Rover Evoque SE Diesel High




Purchase Price **\$47,845**
Includes GST, Registration & Licensing

Finance may be available on this vehicle. Ask one of our friendly staff for more information.



Gain peace of mind with Mechanical Breakdown Insurance. **Ask us how.**



Top features

None Listed

Body Style
SUV

Odometer
75,000 km

Engine
1990 cc

Fuel Type
Diesel

Transmission
Automatic

Wheels
-

VIN
-

Interior
Black

Safety



Based on 2023 UCSR rating for 11-18 models

Reg No.
MCK289

Ext Colour
Silver

History
-

Seats
Leather

CO2 Emissions
★★★★☆
176 grams/km

Energy Economy
★★★★☆☆

Annual fuel cost of \$2,940
6.7L per 100km

Cost per year is an estimate based on diesel price of \$2.00 per litre and an average distance of 14000 km. Includes Road User Charges (RUC). Emissions and Energy Economy figures standardised to 3P WLTP.

Stock ID: 46402



Takapuna Motor Group | Phone 09 580 2081 | Email
auckland@takapunamotorgroup.co.nz
87 Barrys Point Road, Takapuna, Auckland 0622, New Zealand
www.takapunamotorgroup.co.nz

