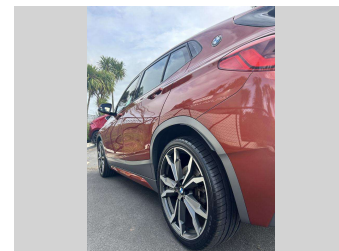
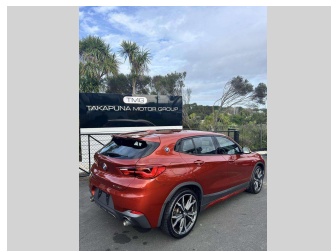
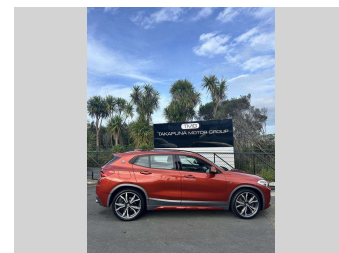
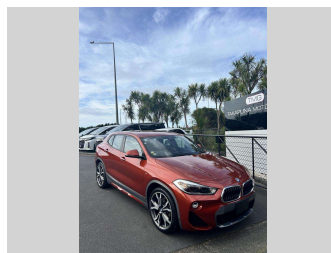


2018 BMW X2 XDRIVE 20i M Spec




Purchase Price **\$29,885**

Includes GST
Excludes on-road costs of \$895

Finance may be available on this vehicle. Ask one of our friendly staff for more information.



Gain peace of mind with Mechanical Breakdown Insurance. **Ask us how.**



Top features

None Listed

Body Style
Hatchback

Odometer
23,419 km

Engine
2000 cc


Fuel Type
Petrol

Transmission
Automatic

Wheels
-

VIN
WBAYH52070EB37221

Interior
-

Safety

Based on 2023 VSRR rating

Reg No.
-

Ext Colour
Orange

History
-

Seats
-

CO2 Emissions
★★★★☆
179 grams/km

Energy Economy
★★☆☆☆
Annual fuel cost of \$2,980
7.6L per 100km

Cost per year is an estimate based on petrol price of \$2.80 per litre and an average distance of 14000 km. Emissions and Energy Economy figures standardised to 3P WLTP.

Stock ID: 46341



Takapuna Motor Group | Phone 09 580 2081 | Email
auckland@takapunamotorgroup.co.nz
87 Barrys Point Road, Takapuna, Auckland 0622, New Zealand
www.takapunamotorgroup.co.nz

